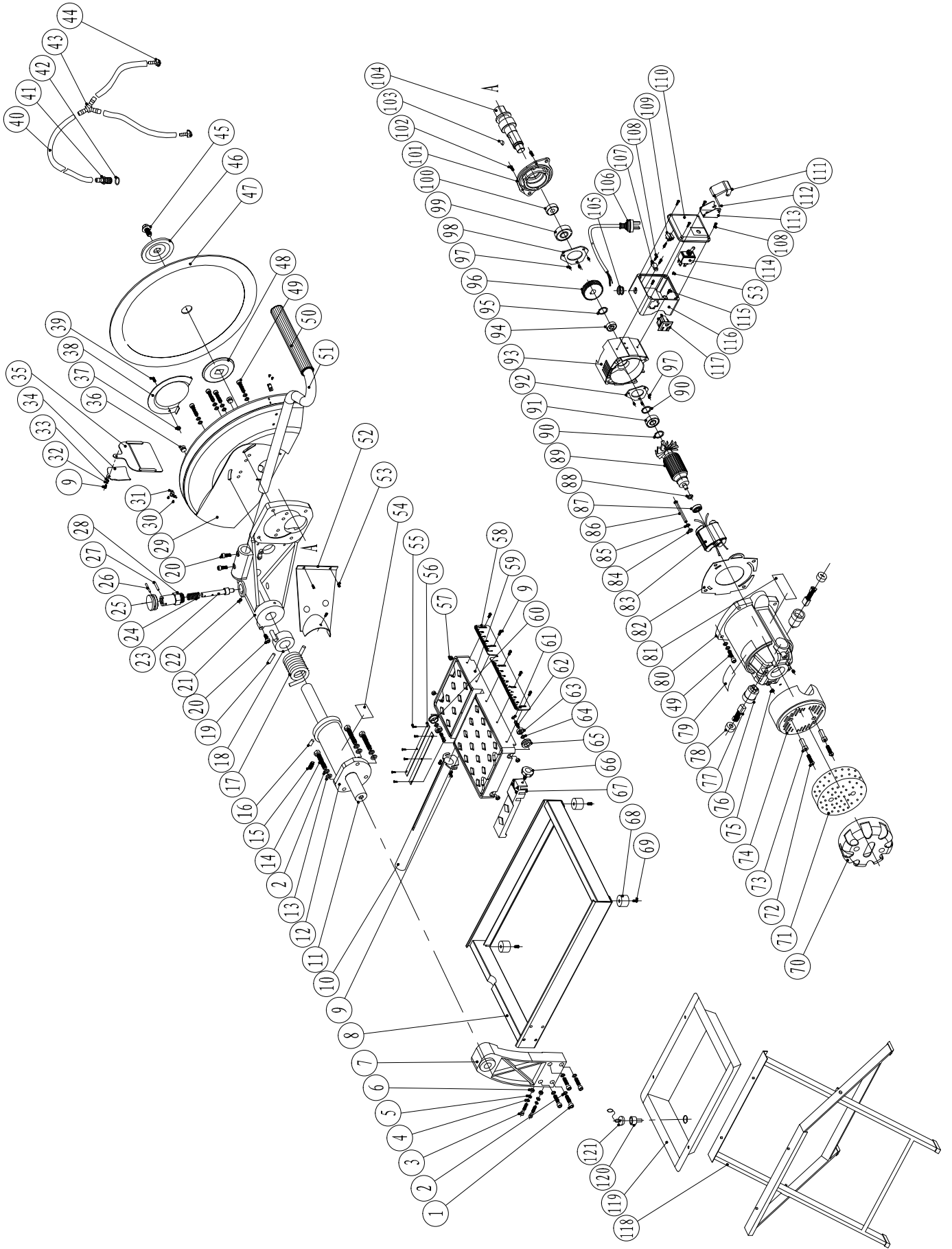




MS14 VENTILATION ET LA LISTE DES PIÈCES BREAKDOWN AND PARTS LIST



Z1E-CF02-355B



Part No.	Description	Part No.	Description
1	inner hexagonal cylindrical head screw M10*50	35	water baffle
2	spring washer Φ 10	36	shield bore cap
3	inner hexagonal cylindrical head screw M8*50	37	lock nut M6
4	spring washer Φ 8	38	small cover board for shield
5	washer Φ 8	39	cross flat head screw M6*12
6	nut M8	40	hose pipe Φ 6*2
7	Vertical lever	41	adapter
8	base assembly	42	rubber sealing Φ 16*3
9	cross pan head screw M6*14	43	tee
10	dust chimney	44	adapter
11	shaft	45	bolt M10*20
12	cantilever shim	46	outer pressure-plate
13	washer Φ 10	47	diamond blade
14	bolt M10*35	48	inner pressure-plate
15	Inner hexagonal tighten bolt M10*20	49	inner hexagonal cylindrical head screw M6*30
16	cone pin 6*16	50	sheathing
17	cylindrical torsion spring	51	handgrip
18	adjusting cover assembly	52	cover of motor support
19	cone pin 6*45	53	cross pan head screw M5*8
20	inner hexagonal cylindrical head screw M6*14	54	warning label
21	motor support	55	countersunk screw M4*6
22	hexagon socket set screws with cone point M5*8	56	cover for movable workbench
23	shaft for adjusting valve	57	lock nut M8
24	spring	58	guide ruler position board
25	handle for adjusting valve	59	movable workbench
26	taper pin 3*20	60	outer loop of idle wheel(right)
27	taper pin 4*18	61	ring for shaft Φ 10
28	position nut	62	bolt for idle wheel(M8*20&M8*25)
29	shield assembly	63	ball bearing 6000
30	cross pan head screw M4*8	64	shim for idle wheel
31	pressure-plate	65	outer loop of idle wheel(left)
32	spring washer Φ 6	66	hand knob
33	washer Φ 6	67	position guide plate
34	pressure-plate	68	footing

Part No.	Description	Part No.	Description
69	bolt M6*20	103	woodruff key 5*7.5*19
70	rear cover	104	output shaft
71	air filter	105	cable sheath
72	cross pan head screw M4*35	106	cabel & plug
73	position tube	107	pressure board
74	rear cover	108	cross pan head tapping screws ST3.5x16
75	hexagon socket set screws with cone point M5*10	109	terminal 20A
76	carbon brush support assembly	110	cover of switch box
77	carbon brush	111	cover of switch
78	brush cap	112	rivet 3*28
79	label	113	base of switch
80	housing	114	switch
81	warning label	115	cross flat head screw M5*20
82	fan shroud	116	switch box
83	stator assembly	117	socket
84	washer Φ 5	118	workbench
85	spring washer Φ 5	119	water collector
86	cross pan head tapping screws ST4.8x75	120	strainer plug
87	ball bearing 6200	121	plug with chain
88	shim 28.5*10*0.4		
89	armature		
90	ring for shaft Φ 15		
91	ball bearing 6202		
92	bearing cover(small one)		
93	mid cover		
94	ball bearing 6001		
95	ring for shaft Φ 16		
96	2# gear		
97	cross flat head screw M4*8		
98	bearing cover(big one)		
99	ball bearing 6203		
100	rubber sealing 22*35*7		
101	bearing base		
102	cross pan head screw M4*12		